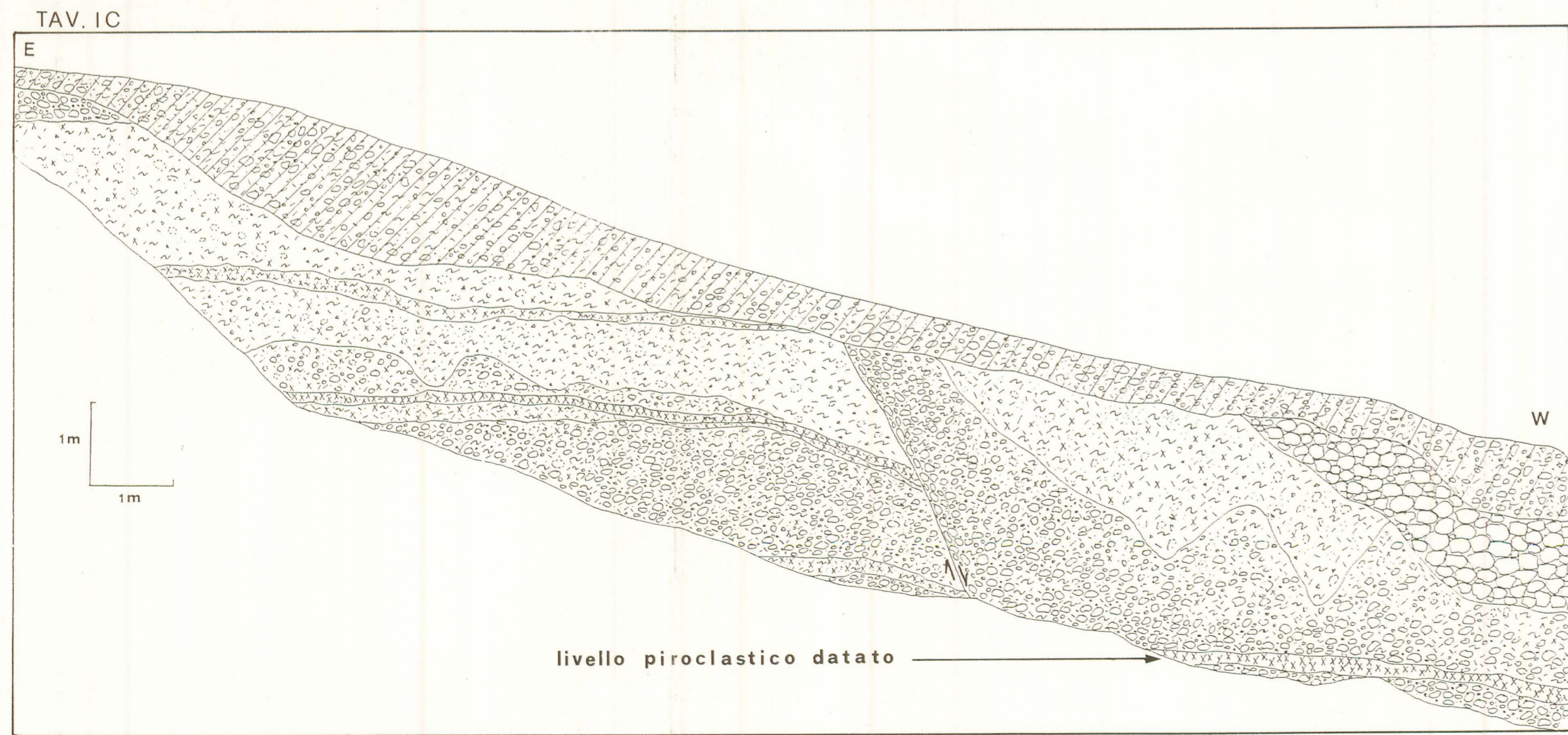
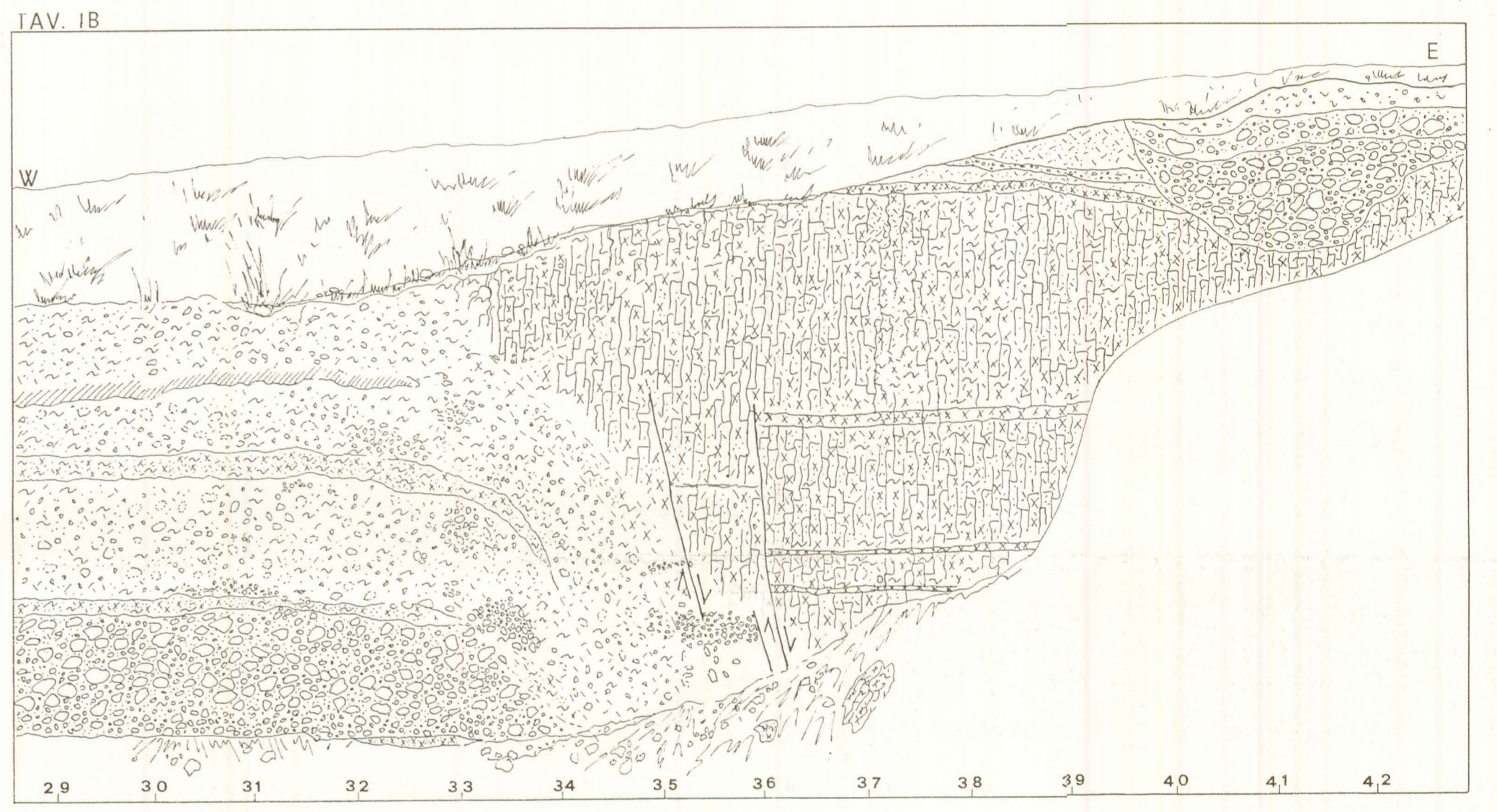
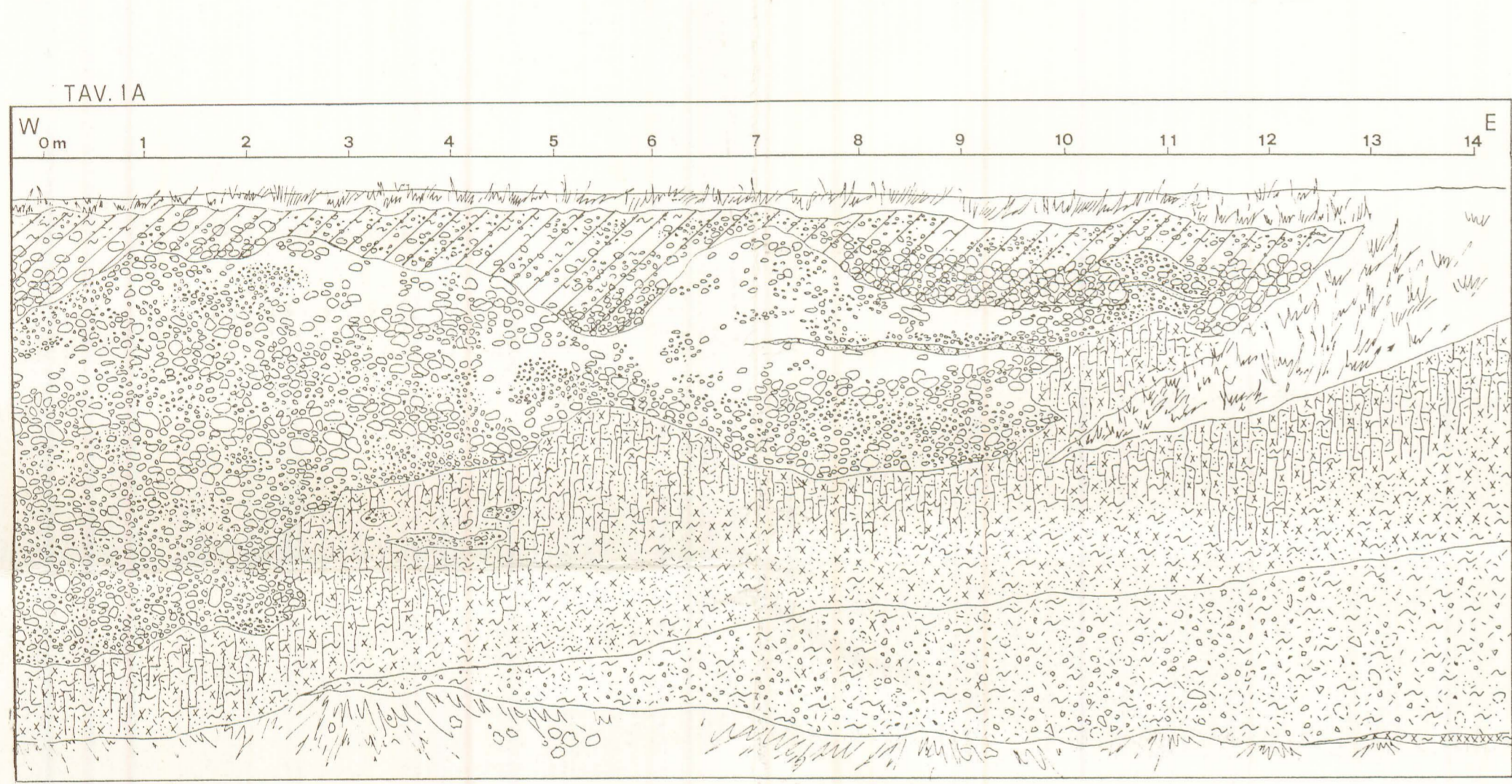
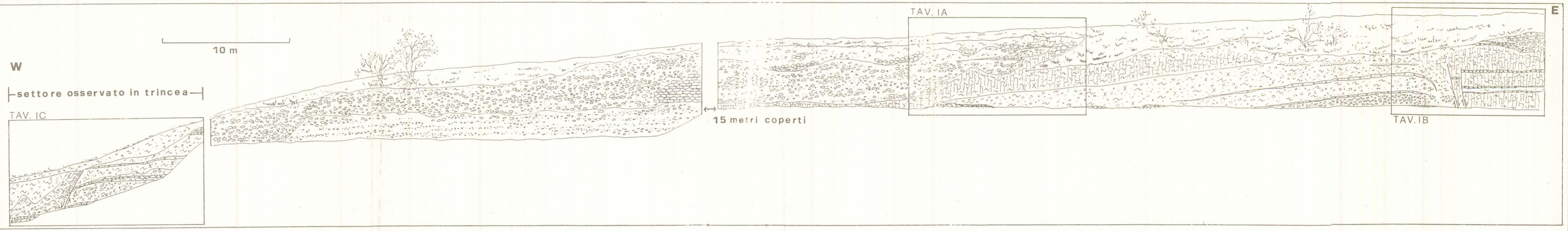


1992/1



A.M. BLUMETTI & F. DRAMIS  
Tavola I - Sezioni stratigrafiche relative all' unità 2

- LEGENDA
- Ghiaie a matrice sabbiosa
  - Sabbia, limo e argilla
  - Frazione piroclastica
  - Aggregazione prismatica
  - Alterazione
  - Scheletro siliceo e "fantasmi" di clasti calcarei
  - Riempimento antropico
  - Colluvioni attuali